

Ornithocephalus dunstervillei Toscano & Carnevali, *sp. nov.* TYPE: VENEZUELA. Bolívar: close to Betania, on the road from Santa Elena de Uairén to Peraitepui-San Rafael, in fairly light forest at about 900m, December 1976, *C. G. K. Dunsterville 1368* (Holotype: SEL, spirit; Isotype: AMES, spirit). Fig. 1.

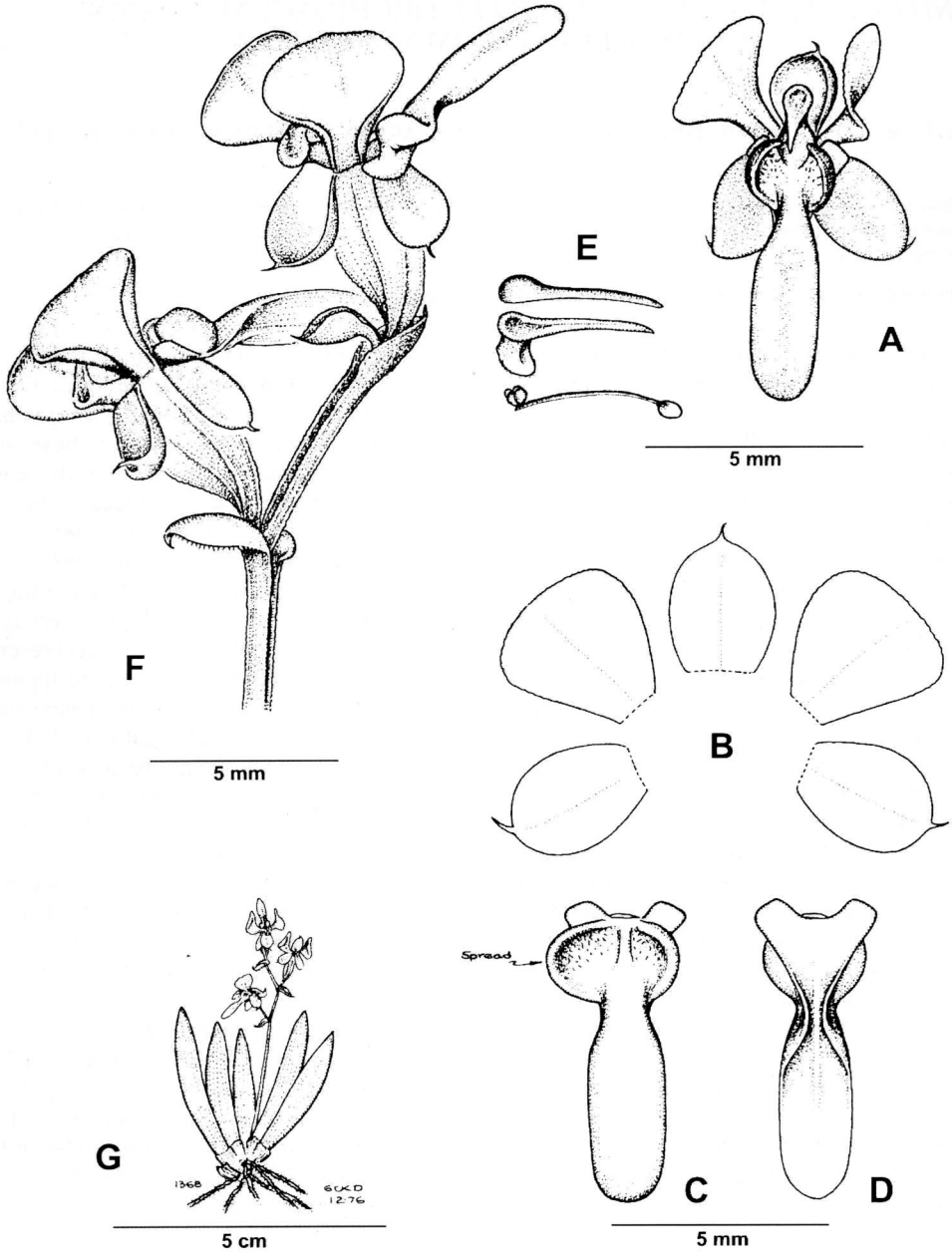


FIGURE 1. *Ornithocephalus dunstervillei* Toscano & Carnevali. **A**, flower; **B**, sepals and petals; **C**, lip in front view; **D**, lip from behind; **E**, anther, column and pollinarium in side view; **F**, apex of inflorescence showing two flowers in side view, notice anthers removed and developing fruits; **G**, habit. Drawing by G. C. K. Dunsterville based on the holotype. Courtesy of the Orchid Herbarium of Oakes Ames, Harvard University Herbaria.

Species haec Ornithocephalo gladiato Hook. *similis, sed labelo ligulato plano vel leviter convexo, callo labelli transversaliter elliptico, lobis calli labelli rotundatis, erectis et valde incurvatis differt.*

Small, psygmoid epiphyte, ca. 30 mm tall (excluding inflorescence). *Roots* hairy, terete. *Stem* inconspicuous, completely covered by the imbricate leaf-sheaths. *Leaves* ca. 25–30 × 4–5 mm, unifacial, bilaterally flattened, ensiform, arranged in a distinctive fan habit, articulated with bifacial, V-shaped leaf-sheaths. *Inflorescence* to 4-flowered, lateral, emerging from the base of the leaf-sheaths, racemose, erect, to ca. 40 mm long; peduncle to 25–30 mm long, bilaterally flattened, with finely denticulate edges; rachis 12–15 mm long, similar to the peduncle, flexuous; floral bracts ca. 3.5 mm long, somewhat oblique, convex, abaxially carinate on mid-vein, the margins revolute and hairy, the apex finely mucronate. *Flowers* white with yellow lip callus. *Ovary* pedicellate ca. 5 mm long, glabrous. *Sepals* ca. 3 × 2 mm, free, somewhat obovate-elliptic, strongly reflexed, finely and distinctly mucronate at apex, with entire to lightly erose margins, the dorsal sepal concave, the laterals flat. *Petals* ca. 3.2 × 3.2 mm, projected forwards as if to shield the column, markedly distinct from the sepals, flabellate, broadly obovate, abaxially thickened on mid-vein, rounded at apex, the margins of the tapering basal half strongly revolute, the apical margins erose. *Lip* ca. 6.5 × 1.8 mm across the mid-lobe, elongate, bi-lobed at base, narrowing towards the middle to form a distinct isthmus, provided with a prominent basal callus on disc; callus transversely elliptic when spread, ca. 3.2 × 1.8 mm, fleshy, bearing fairly long white trichomes within, callus lobes erect, incurved, rounded; lateral lobes small, retrorse, ear-shaped to somewhat quadrate when seen from above; mid-lobe ligulate, thin, narrowed at base, flat to

slightly convex, abaxially slightly carinate, when seen from below the margins of the lip become revolute at the isthmus and then widen out towards the base to form 2, flat, lateral lobes. *Column* ca. 4.5 mm long (including rostellum), the basal portion slightly incurved and somewhat terete, provided at base with a relatively large, elliptic stigmatic-cavity; the upper portion distinctly geniculate, prolonged at apex into a conspicuous attenuate rostellum, ca. 3 mm long, markedly beaked; anther ca. 3.7 mm long, strongly beaked, dilated at base and attenuate towards the acute apex; pollinia four, in two subequal pairs, obovoid; stipe ca. 3.3 mm long, linear; viscidium elliptic.

Distribution: known only from the type locality.

Eponymy: named after its discoverer, Mr. G. C. K. ‘Stalky’ Dunsterville (1905–1988), an orchid grower, plant collector and botanical artist who authored with Leslie A. Garay the six volumes of *Venezuelan Orchids Illustrated* (1959–1976).

This species is similar to *Ornithocephalus gladius* from which it may be distinguished by the shape of the lip and lip callus. In *O. dunstervillei* the midlobe of the lip is ligulate, flat to slightly convex, the lip callus is transversely elliptic in outline, and the callus lobes are markedly erect, incurved and rounded. In *O. gladius*, the midlobe of the lip is concave, oblong-elliptic to somewhat spatulate and slightly incurved, the lip callus is broadly ovate or cordate in outline, more spreading, with narrower, arcuate lobes, and somewhat sagittate at the base. *Ornithocephalus dunstervillei* was identified as *O. falcatus* by Carnevali Fernández-Concha and Ramírez-Morillo (2003), who provided a fine and detailed illustration of this species. This illustration, which is reproduced here, was prepared by G. C. K. Dunsterville and a copy is now deposited at AMES.